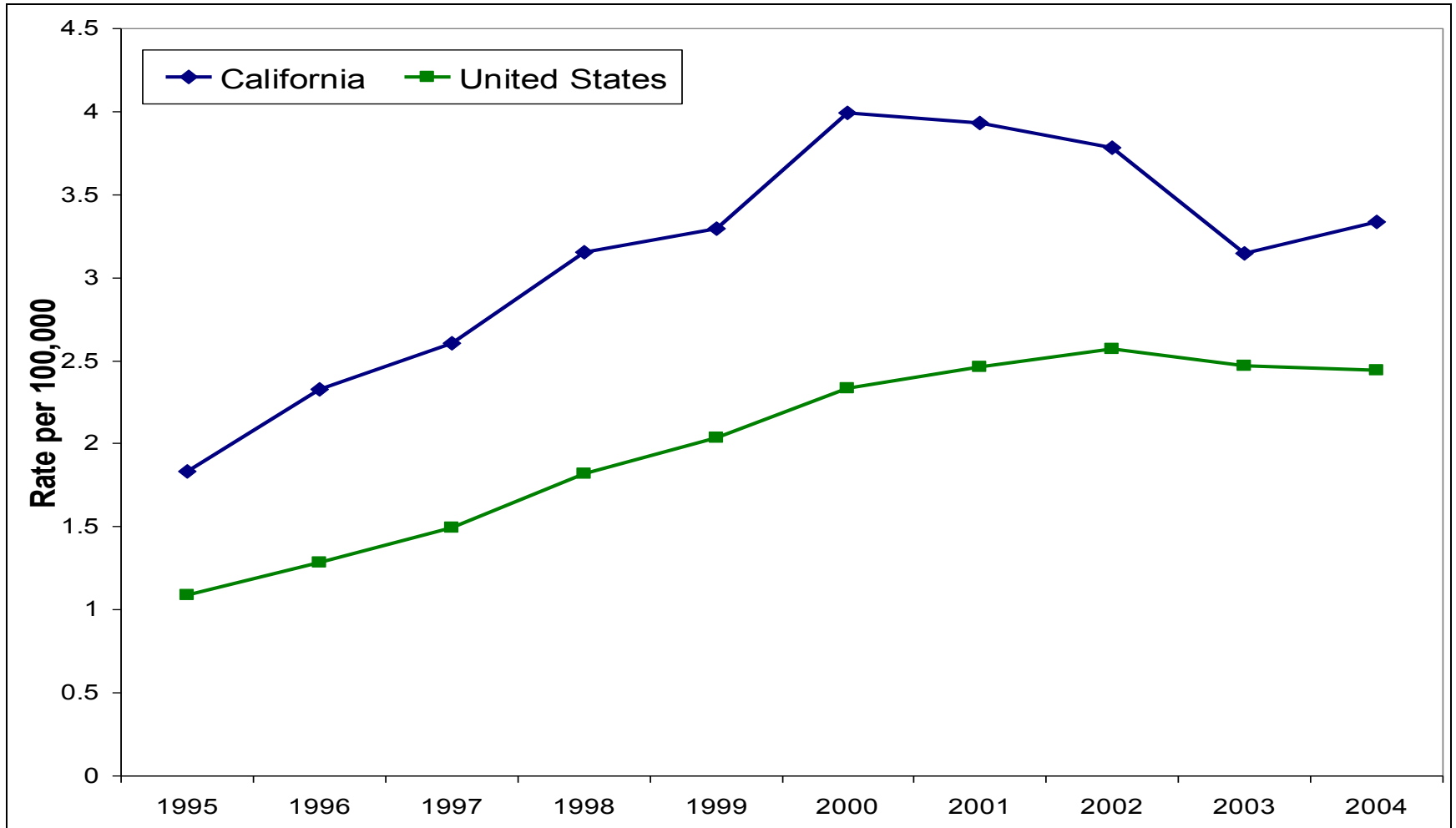
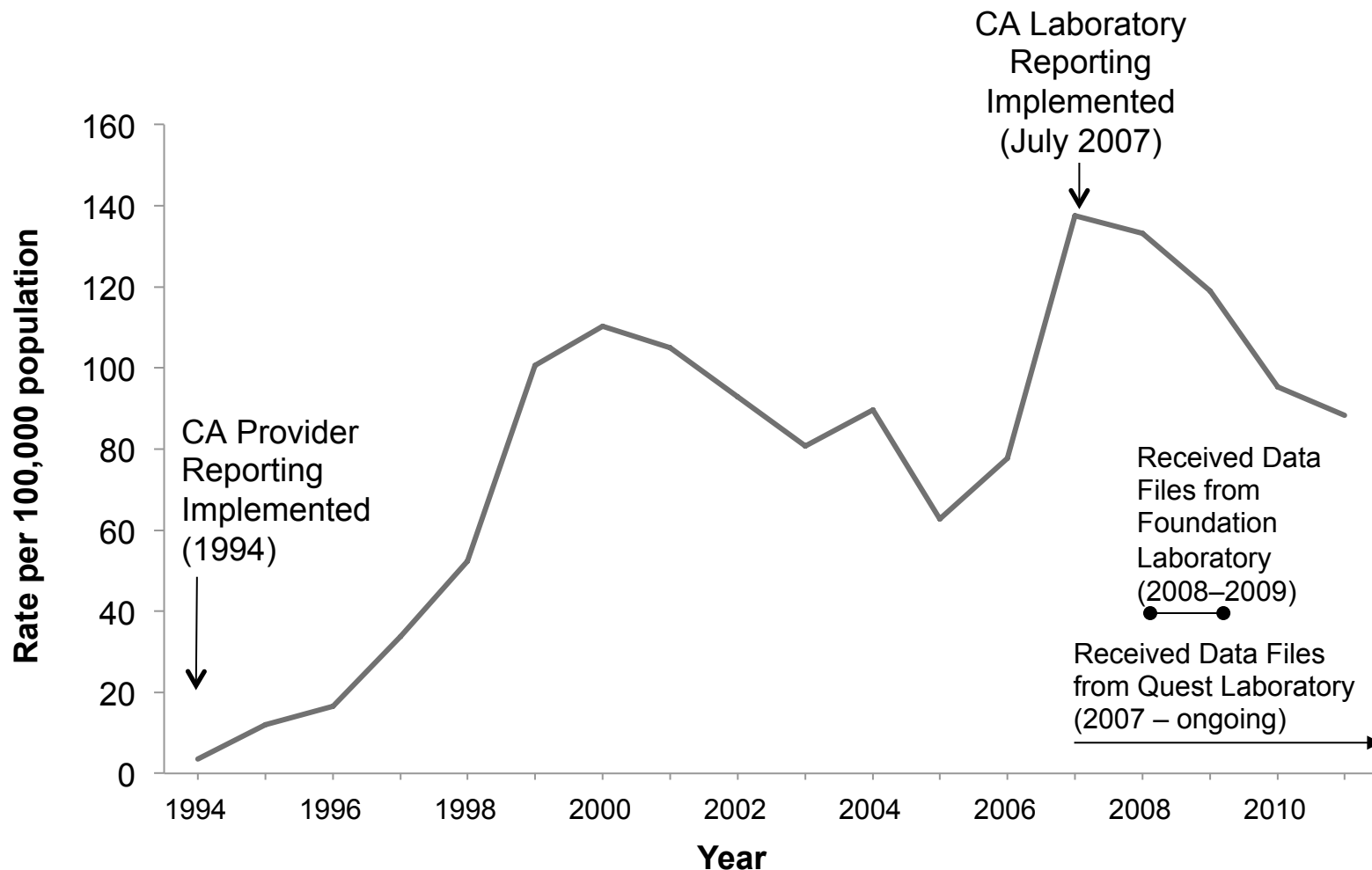


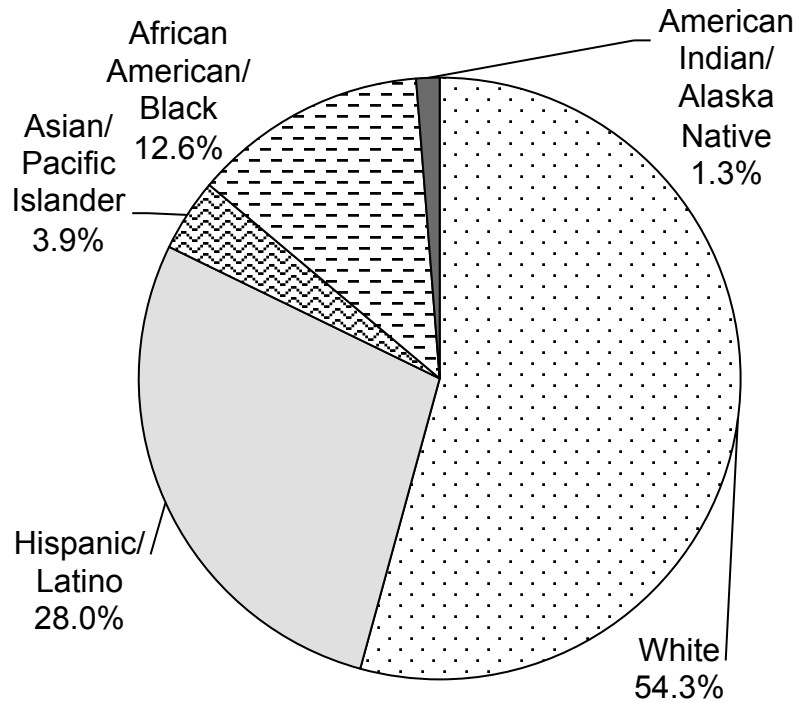
# Annual Age-Adjusted Hepatitis C Mortality Rates, CA & U.S., 1995-2004



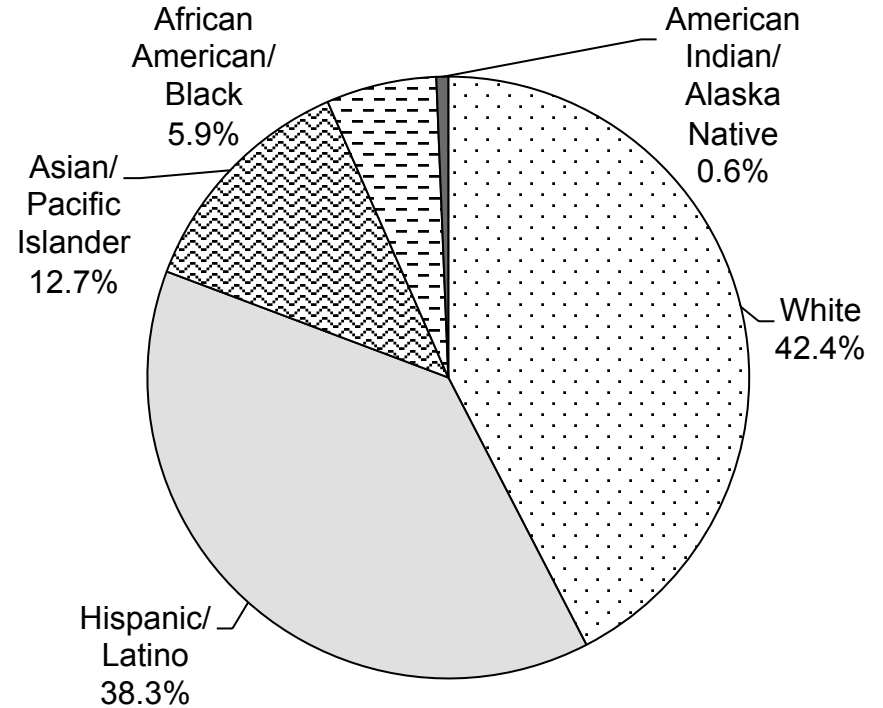
# Chronic Hepatitis C – Rates of Newly Reported Cases, California, 1994-2011



# Chronic Hepatitis C – Percent of Newly Reported Cases for Which Race/Ethnicity is Known, by Race/Ethnicity compared with the General Population, California, 2011



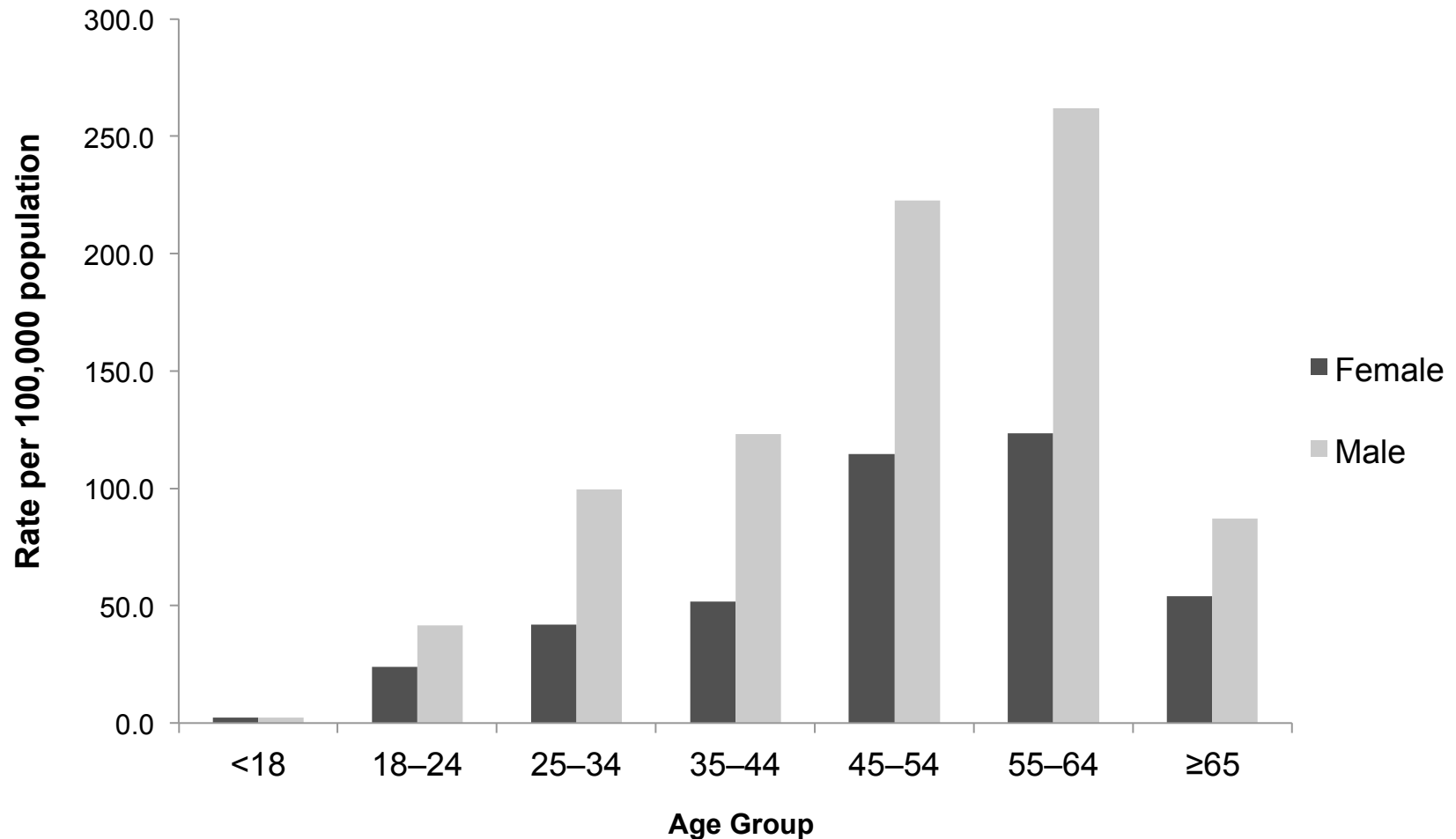
**Newly Reported Cases of Chronic Hepatitis C**



**General Population of California**

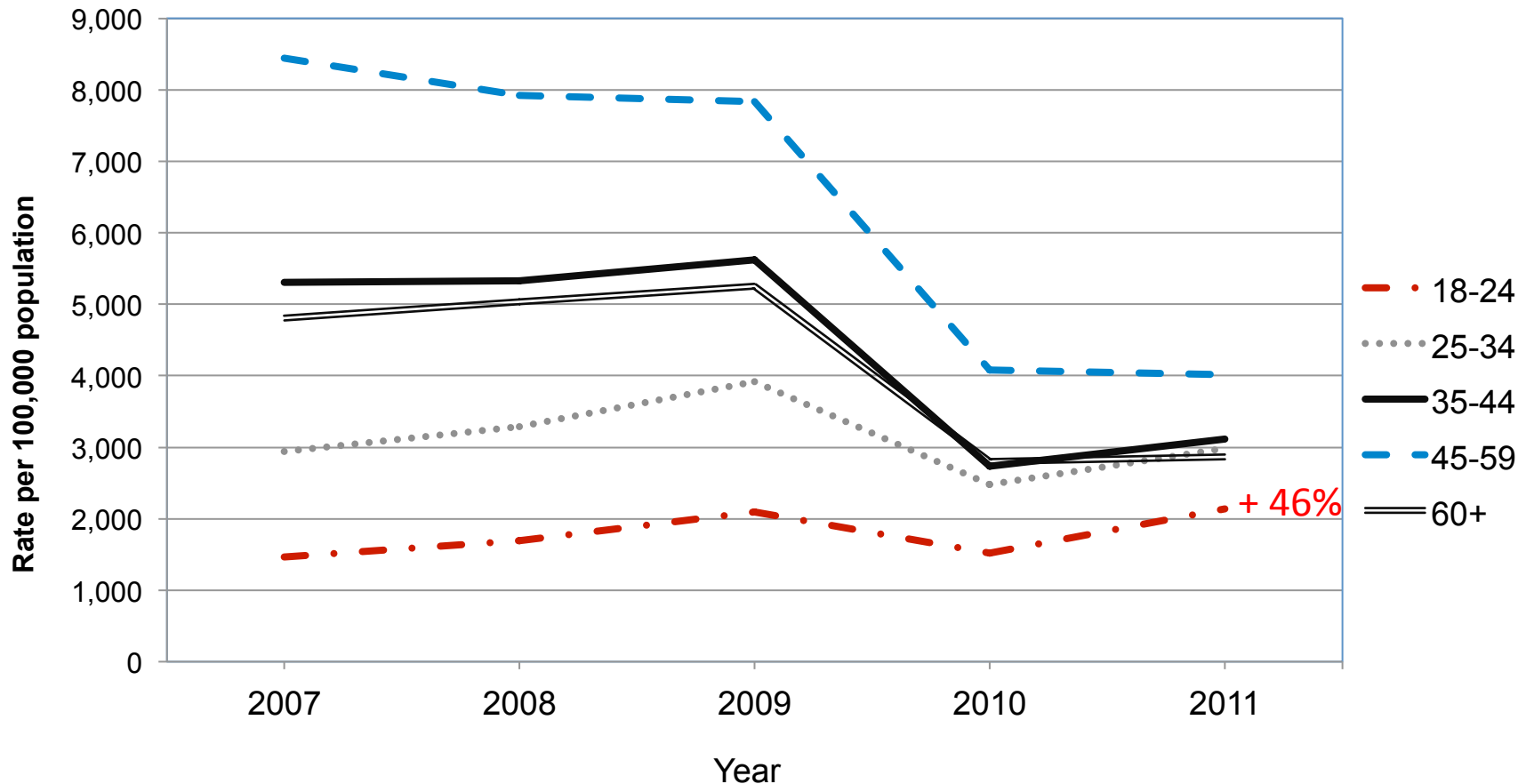
Note: The percentages shown are among the cases with known race/ethnicity. Race/ethnicity information was missing for more than two-thirds (67.9 to 81.8 percent) of cases from 2007-2011.

# Chronic Hepatitis C – Cases and Rates of Newly Reported Cases (per 100,000) by Age and Gender, California, 2011



Source: *Chronic Hepatitis B and Hepatitis C Infections in California: Cases Newly Reported through 2011*. California Department of Public Health (CDPH), Sexually Transmitted Diseases (STD) Control Branch, November 2013

# Chronic Hepatitis C – Rates of Newly Reported Cases *in State Prisons* by Age\*, California, 2007-2011



\* State prison census data use different age group categories than the California Department of Finance categories used in this slide set.



# Hepatitis-Related Hospitalizations by Infection Status, California, 2002–2011

